

O.C. 263 DECK BARGE

REGISTRATION

Official No. 640644
 Port of. Houma, Louisiana
 Builder Bergeron Industries
 Year. 1981
 Net Tonnage. 2,198.00
 Gross Tonnage. 2,198.40

DIMENSIONS

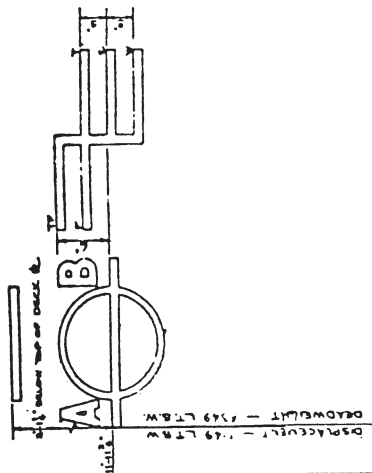
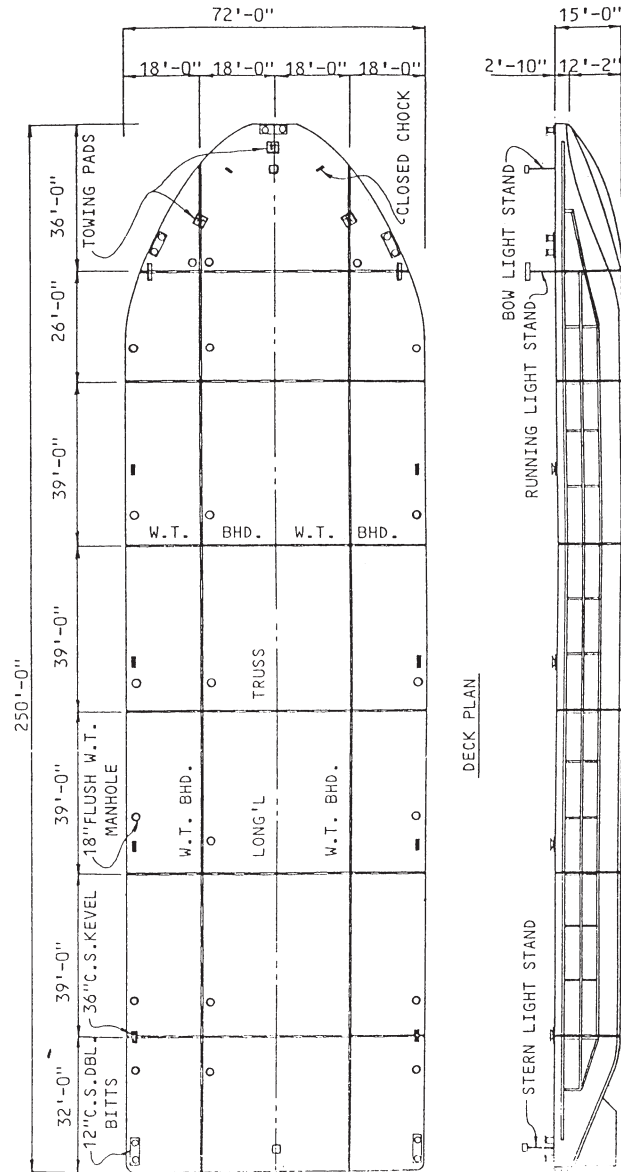
Length 250 ft
 Beam 72 ft
 Depth 15.6 ft
 Light Draft2 ft
 Maximum Draft 12 ft

CAPACITIES

Deck Cargo 4,800 tons
 Liquid Cargo 35,000 bbls

SPECIAL FEATURES

Specially designed bow for high speed towing in heavy seas. Heavy construction for both deck and chemical service.



DEADWEIGHT SCALE		TOTAL DISPLACEMENT	
DEADWEIGHT (LBS)	DEADWEIGHT (TONS)	TOTAL DISPLACEMENT (LBS)	TOTAL DISPLACEMENT (TONS)
0	0	0	0
100	0.72	100	0.72
200	1.44	200	1.44
300	2.16	300	2.16
400	2.88	400	2.88
500	3.60	500	3.60
600	4.32	600	4.32
700	5.04	700	5.04
800	5.76	800	5.76
900	6.48	900	6.48
1000	7.20	1000	7.20
1100	7.92	1100	7.92
1200	8.64	1200	8.64
1300	9.36	1300	9.36
1400	10.08	1400	10.08
1500	10.80	1500	10.80
1600	11.52	1600	11.52
1700	12.24	1700	12.24
1800	12.96	1800	12.96
1900	13.68	1900	13.68
2000	14.40	2000	14.40
2100	15.12	2100	15.12
2200	15.84	2200	15.84
2300	16.56	2300	16.56
2400	17.28	2400	17.28
2500	18.00	2500	18.00
2600	18.72	2600	18.72
2700	19.44	2700	19.44
2800	20.16	2800	20.16
2900	20.88	2900	20.88
3000	21.60	3000	21.60
3100	22.32	3100	22.32
3200	23.04	3200	23.04
3300	23.76	3300	23.76
3400	24.48	3400	24.48
3500	25.20	3500	25.20
3600	25.92	3600	25.92
3700	26.64	3700	26.64
3800	27.36	3800	27.36
3900	28.08	3900	28.08
4000	28.80	4000	28.80
4100	29.52	4100	29.52
4200	30.24	4200	30.24
4300	30.96	4300	30.96
4400	31.68	4400	31.68
4500	32.40	4500	32.40
4600	33.12	4600	33.12
4700	33.84	4700	33.84
4800	34.56	4800	34.56
4900	35.28	4900	35.28
5000	36.00	5000	36.00