



# O.C. 256 DECK BARGE

## REGISTRATION

Official No. .... 603531  
 Port of ..... Houma, Louisiana  
 Builder ..... Equitable Shipyard  
 Year ..... 1979  
 Net Tonnage ..... 2,198.00  
 Gross Tonnage ..... 2,198.40

## DIMENSIONS

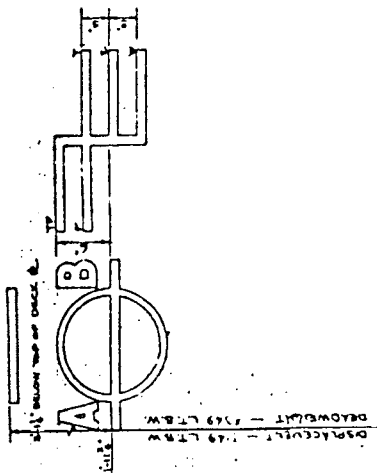
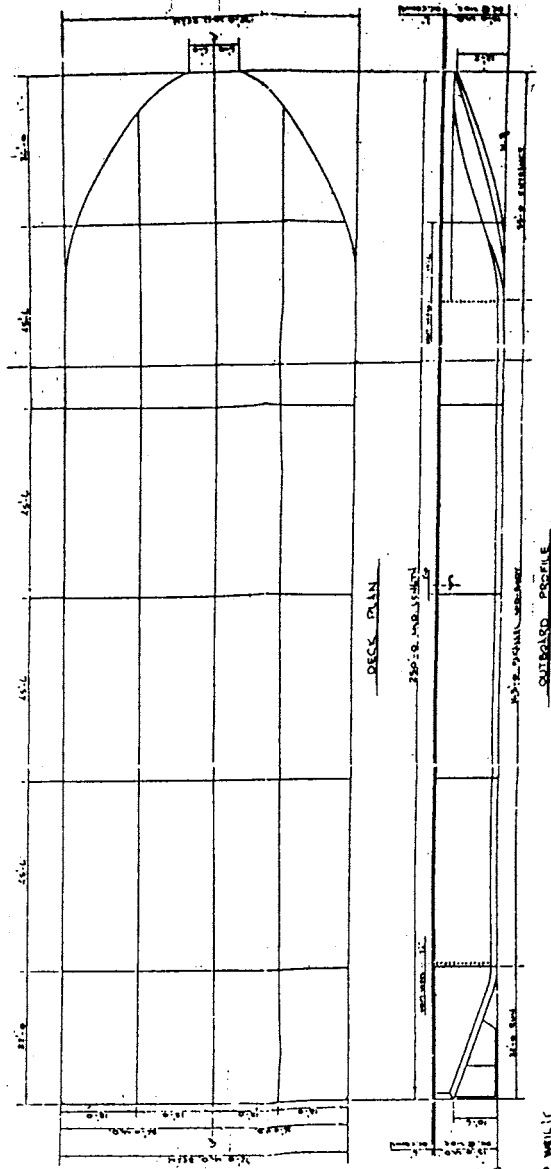
Length ..... 250 ft  
 Beam ..... 72 ft  
 Depth ..... 15.6 ft  
 Light Draft ..... .2 ft  
 Maximum Draft ..... 12 ft

## CAPACITIES

Deck Cargo ..... 4,800 tons  
 Liquid Cargo ..... 35,000 bbls

## SPECIAL FEATURES

Specially designed bow for high speed towing in heavy seas. Heavy construction for both deck and chemical service.



DEADWEIGHT SCALE	TOTAL TONNAGE		TOTAL DISPLACEMENT	
	(LBS)	(TONS)	(LBS)	(TONS)
0	0	0	0	0
100	100	45.36	100	45.36
200	200	90.72	200	90.72
300	300	136.08	300	136.08
400	400	181.44	400	181.44
500	500	226.80	500	226.80
600	600	272.16	600	272.16
700	700	317.52	700	317.52
800	800	362.88	800	362.88
900	900	408.24	900	408.24
1000	1000	453.60	1000	453.60
1100	1100	498.96	1100	498.96
1200	1200	544.32	1200	544.32
1300	1300	589.68	1300	589.68
1400	1400	635.04	1400	635.04
1500	1500	680.40	1500	680.40
1600	1600	725.76	1600	725.76
1700	1700	771.12	1700	771.12
1800	1800	816.48	1800	816.48
1900	1900	861.84	1900	861.84
2000	2000	907.20	2000	907.20
2100	2100	952.56	2100	952.56
2200	2200	997.92	2200	997.92
2300	2300	1043.28	2300	1043.28
2400	2400	1088.64	2400	1088.64
2500	2500	1134.00	2500	1134.00
2600	2600	1179.36	2600	1179.36
2700	2700	1224.72	2700	1224.72
2800	2800	1270.08	2800	1270.08
2900	2900	1315.44	2900	1315.44
3000	3000	1360.80	3000	1360.80
3100	3100	1406.16	3100	1406.16
3200	3200	1451.52	3200	1451.52
3300	3300	1496.88	3300	1496.88
3400	3400	1542.24	3400	1542.24
3500	3500	1587.60	3500	1587.60
3600	3600	1632.96	3600	1632.96
3700	3700	1678.32	3700	1678.32
3800	3800	1723.68	3800	1723.68
3900	3900	1769.04	3900	1769.04
4000	4000	1814.40	4000	1814.40
4100	4100	1859.76	4100	1859.76
4200	4200	1905.12	4200	1905.12
4300	4300	1950.48	4300	1950.48
4400	4400	1995.84	4400	1995.84
4500	4500	2041.20	4500	2041.20
4600	4600	2086.56	4600	2086.56
4700	4700	2131.92	4700	2131.92
4800	4800	2177.28	4800	2177.28
4900	4900	2222.64	4900	2222.64
5000	5000	2268.00	5000	2268.00