

M/V GRANT CANDIES

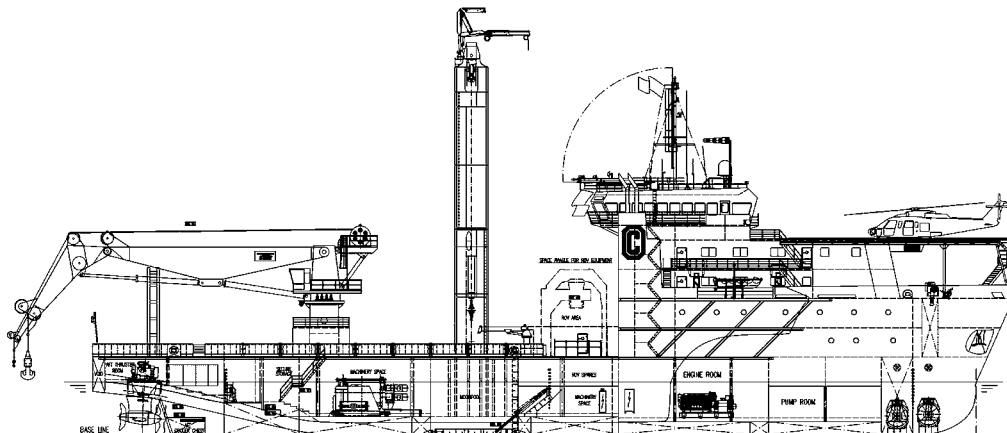


MAIN CHARACTERISTICS

Builder	Dakota Creek Industries
Hull Number	50
Length Overall	89.25m
Length Waterline	81.70m
Breadth Molded	18.0m
Depth Molded	7.4m
Design Draught	5.0m
Scantling Draught	6.0m
Trial Speed T=5.0m	12.0 kts
Dead Weight T=6.0m	3700 tons
Complement	76 persons
Cargo Deck	820 m2/8826 ft2
Fuel	194,000 gallons
Fresh Water	235,000 gallons
Water Ballast	1726 m3
Regulatory	ABS, US Flag
Tunnel Thrusters	2 x 1,000 kW STT 4 CP (Schottel)
Stern Thrusters	2 x 2,250 kW Combi Drive (Schottel)
Main Engines	2 x 3512C CAT- 1700 kW each 2 x 3516C CAT- 2250 kW each

SPECIAL FEATURES

Deck Crane	100 ton Knuckle Boom Crane (Offshore Rated)
Main Deck	Suitable for loads up to 5 tons per square meter
Deep Sea Winch	100 ton single drum below deck winch
Mast	100 ton deck mast with active and passive heave compensation for servicing of moon pool with deep sea winch
Moon pool	25' long x 20' wide clear opening with bottom door open. 28' long x 20' wide with bottom door closed .
Skidding System	Sliding deck hatch capable of transporting 100 ton loads to center of moon pool for service mast/deep sea winch.
Heliport	Vessel is equipped with a heliport according to CAA regulations and is suitable for a Bell 212, Sikorsky S76 and smaller helicopters with a "D" value of 17.64 m or less.
Control Room	Control room on C-Deck arranged for (2) ROV systems.
Cinema	Private Cinema located on main deck with stadium seating and 55" big screen T.V. with surround system.
Gymnasium	Gymnasium on B-Deck equipped with weight machines and exercise equipment.
Conference Room	Private Conference Room on D-deck level
Hospital	Fully equipped hospital located on C-Deck.
Survey	Designated area in pilot house for survey group
Ship's Office	Built in Semi-Private ships office in pilot house



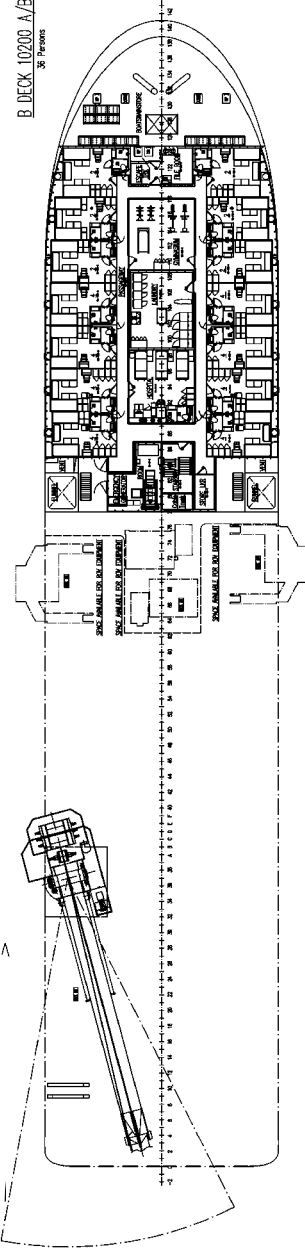
OTTO CANDIES, LLC

Post Office Box 25 • Des Allemands, Louisiana 70030-0025

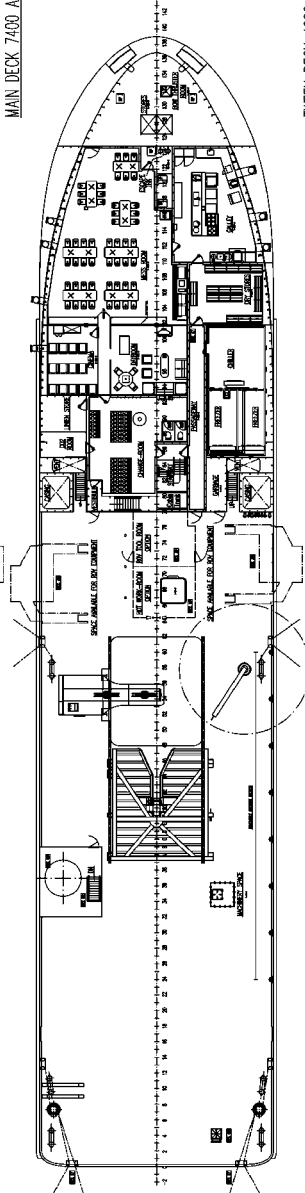
Telephone: (504) 469-7700 • Fax: (504) 469-7740 • www.ottocandies.com



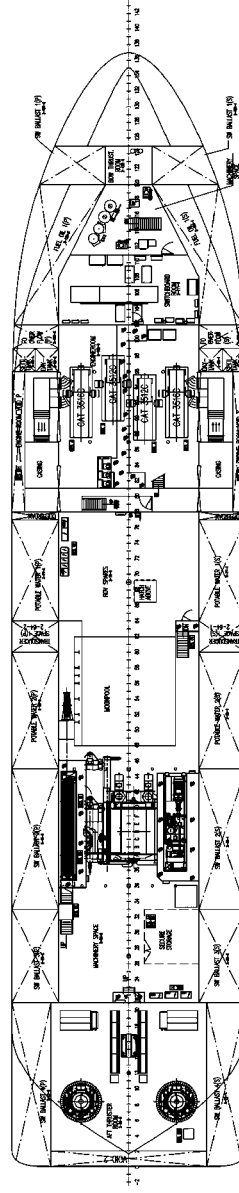
B. DECK 10200 A/B B.L.
36 Persons



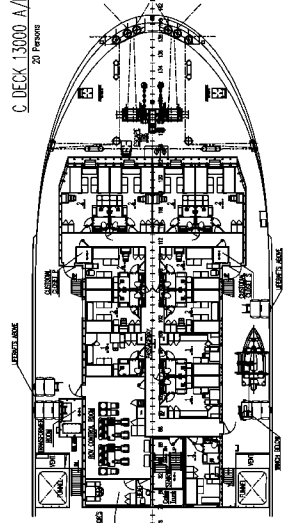
MAIN DECK 7400 A/B B.L.



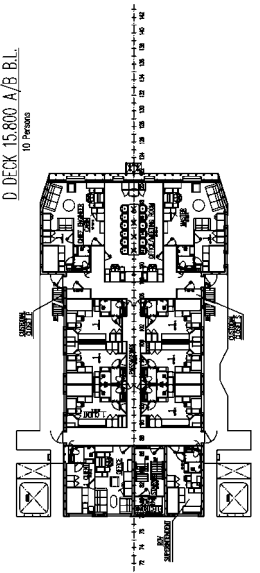
THIRD DECK 4600 A/B B.L.



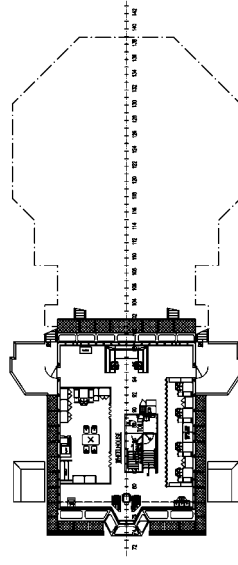
C. DECK 13000 A/B B.L.
20 Persons



D. DECK 15800 A/B B.L.
10 Persons



E. DECK 20000 A/B B.L.



E. DECK 18800 A/B B.L.

